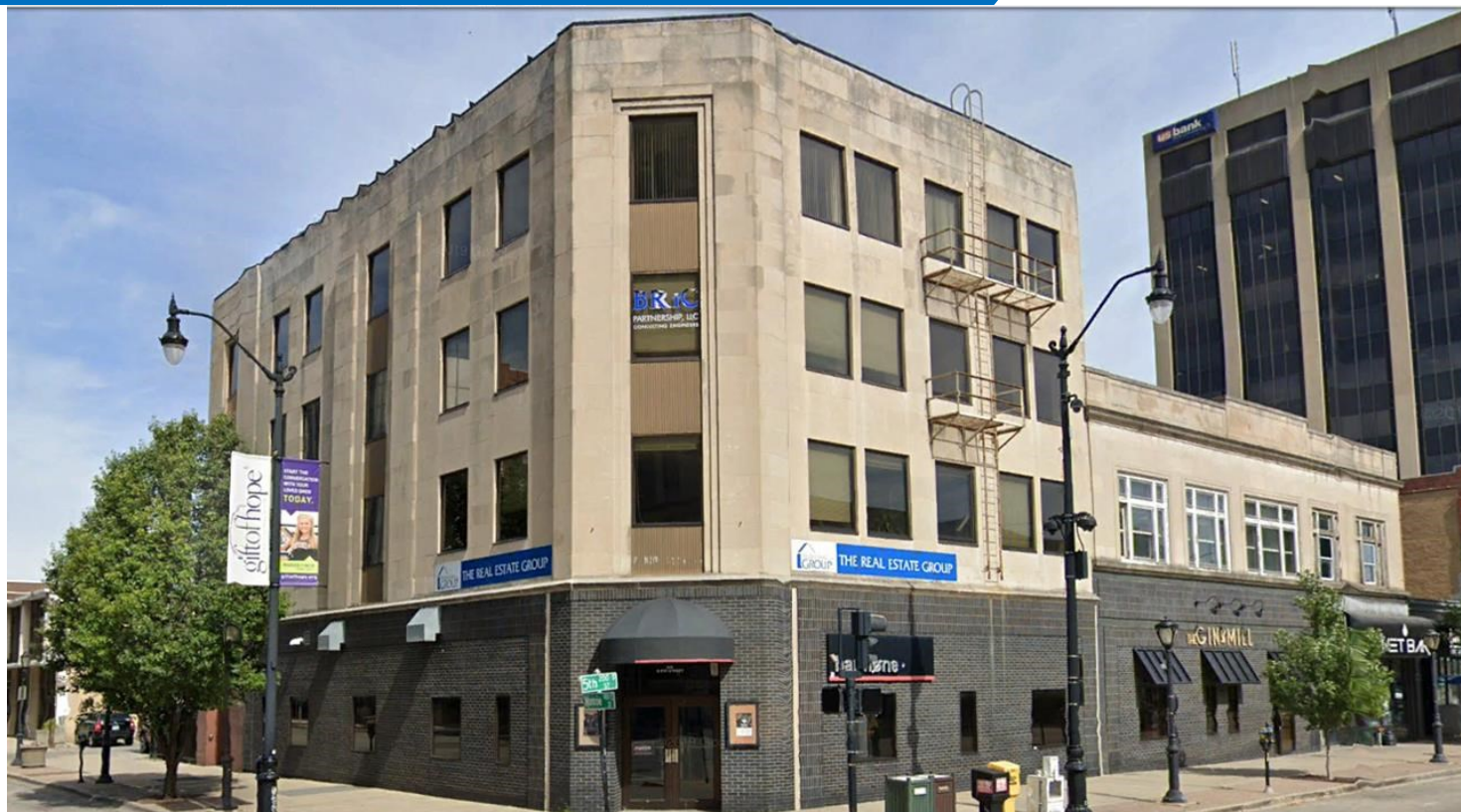


# FOR SALE OR LEASE

427 E. Monroe, Springfield, IL



## Professional Office Space For Lease

### Property Information

SQ. FT.	TOTAL SF	LEASE RATE	ZONING	LIST PRICE	OCCUPANCY
3rd floor: 1,050	18,000	\$14/sf gross	S-3	\$750,000	95%

#### Features

Excellent office space located on a prime corner in downtown Springfield. One suite available. Ideal location for lobbyist, attorney, architect, accountant or any other professional needing downtown office space. Listing agent has a financial interest in the property.

#### Area

Property is located on the corner of 5th and Monroe in downtown Springfield. Just 3 blocks from the State Capitol and Amtrak station, next door to the post office and 3 banks are within 1-2 blocks. Multiple restaurants and gift shops also minutes away. Building is approx. 1 mile to Memorial Medical Center, St. John's Hospital and other facilities in the Medical District.

[CURTISTILLETT.COM](http://CURTISTILLETT.COM)

Curtis Tillett | 217-726-3298 | [curtis@curtistillett.com](mailto:curtis@curtistillett.com)

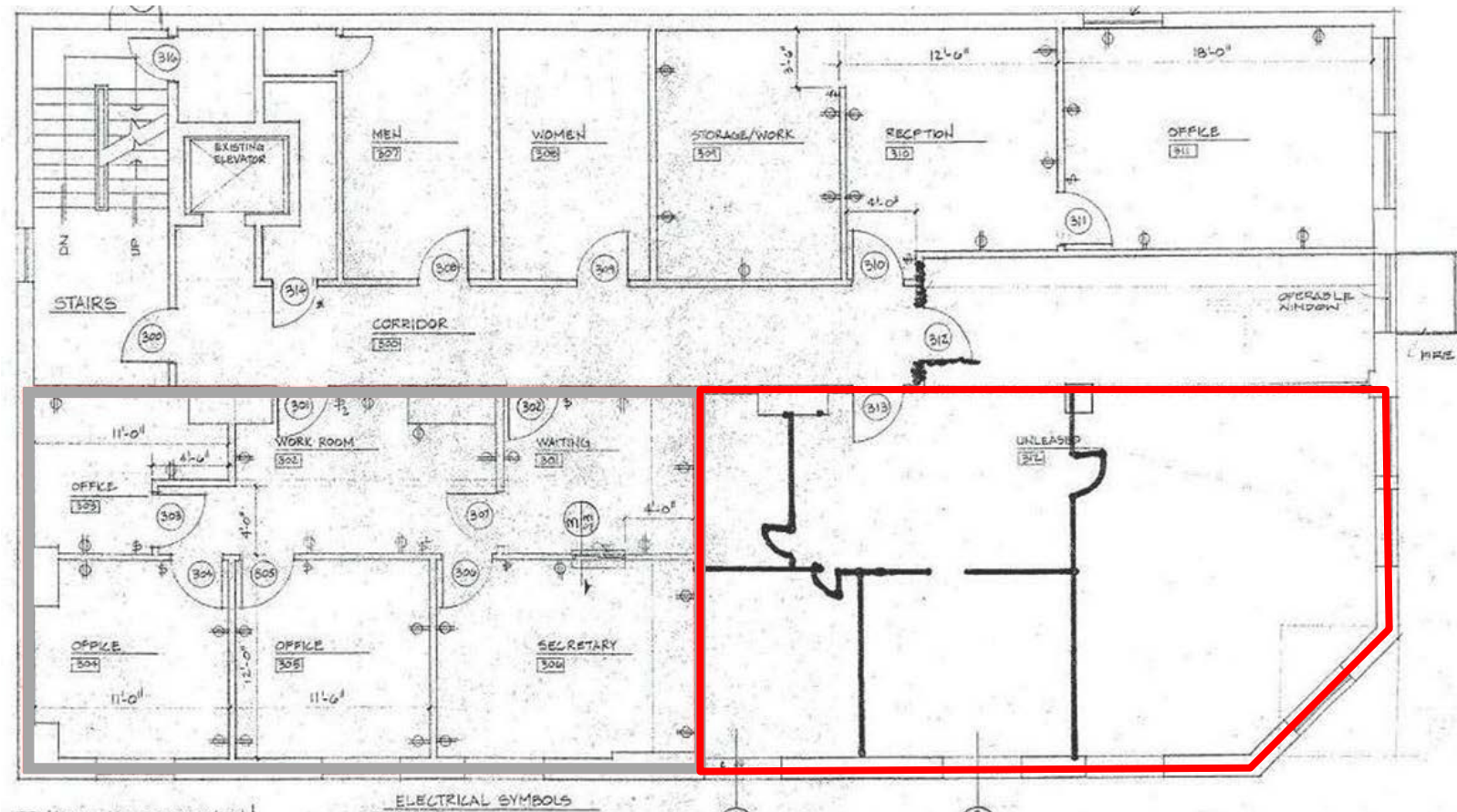
THE REAL ESTATE GROUP  
907 Clocktower Dr.  
Springfield, IL 62701  
217-726-3298

# FOR SALE OR LEASE

427 E. Monroe, Springfield, IL



## 3rd Floor





# FOR SALE OR LEASE

427 E. Monroe, Springfield, IL

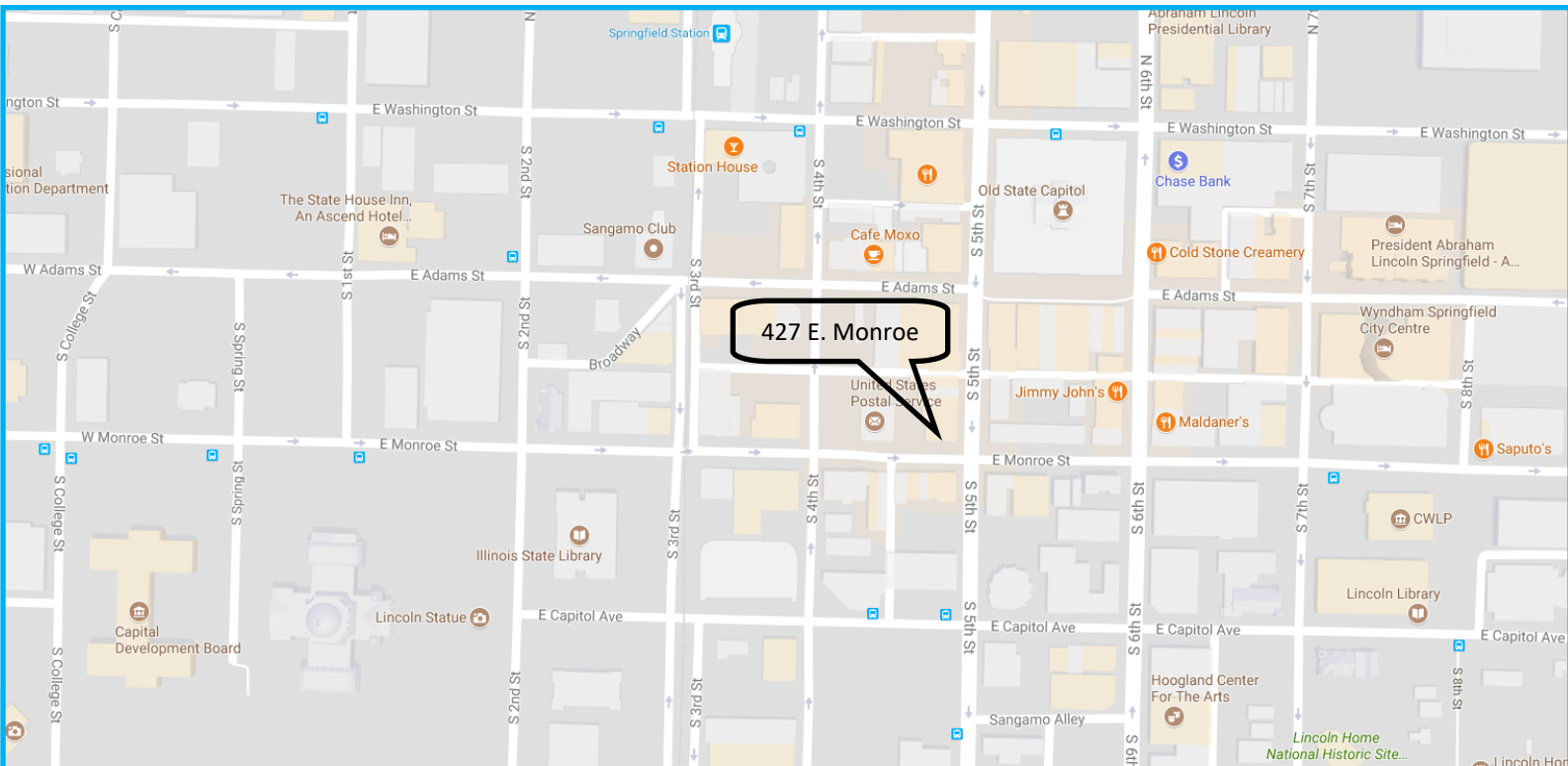
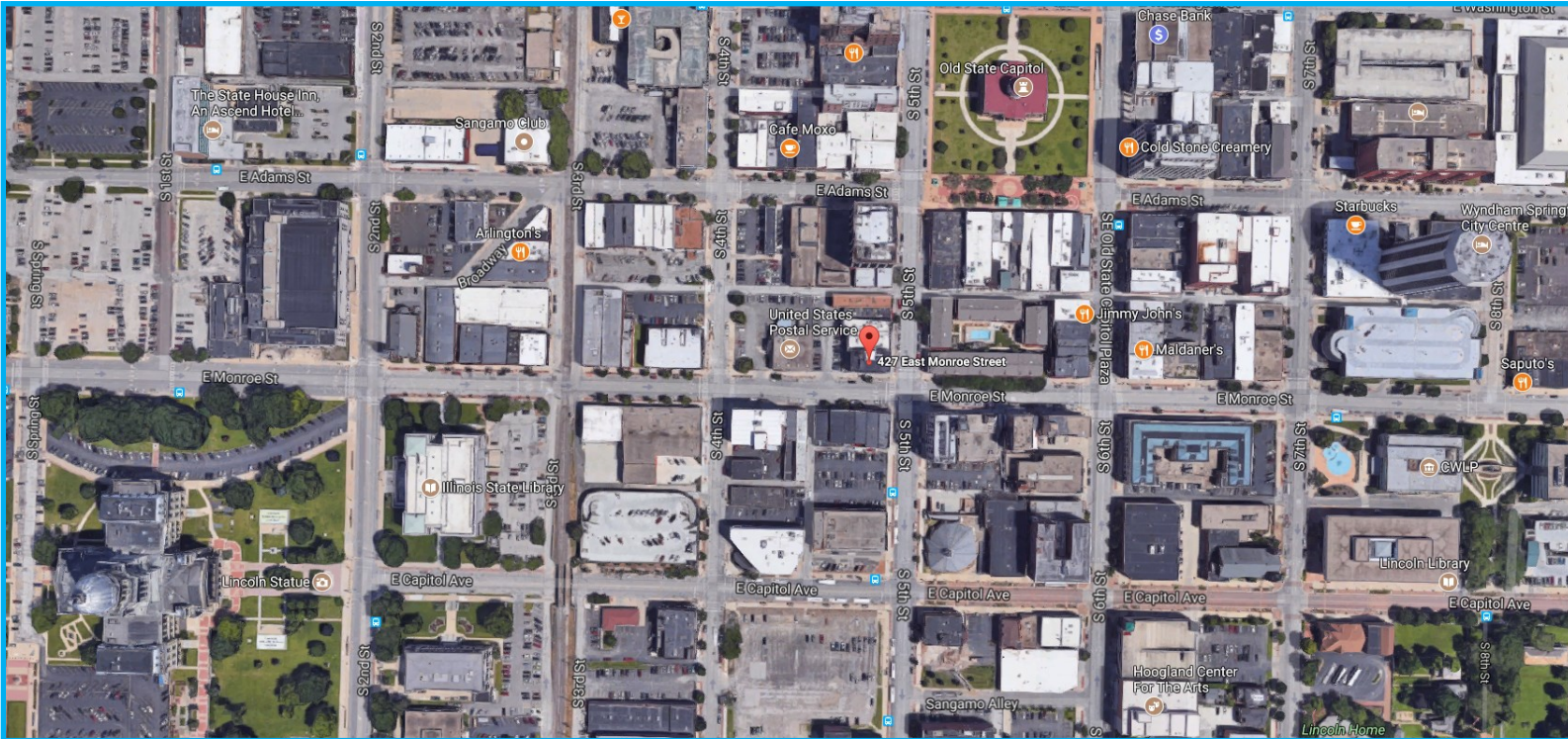


[CURTISTILLET.COM](http://CURTISTILLET.COM)

THE REAL ESTATE GROUP  
907 Clocktower Dr.  
Springfield, IL 62701  
217-726-3298

# FOR SALE OR LEASE

427 E. Monroe, Springfield, IL



**Curtis Tillett | 217-726-3298 | [curtis@curtistillett.com](mailto:curtis@curtistillett.com)**

**[CURTISTILLETT.COM](http://CURTISTILLETT.COM)**

**THE REAL ESTATE GROUP**  
907 Clocktower Dr.  
Springfield, IL 62701  
217-726-3298